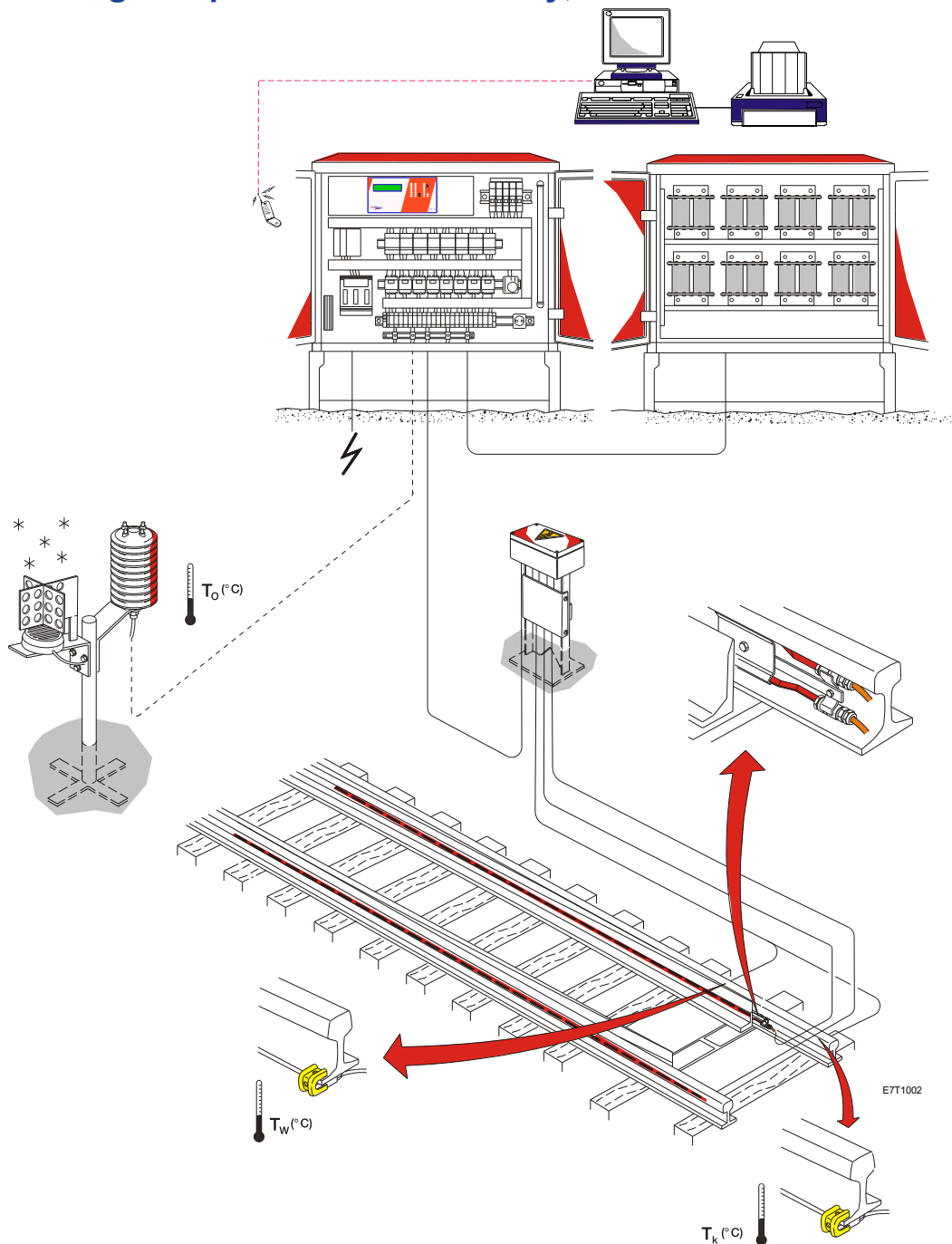
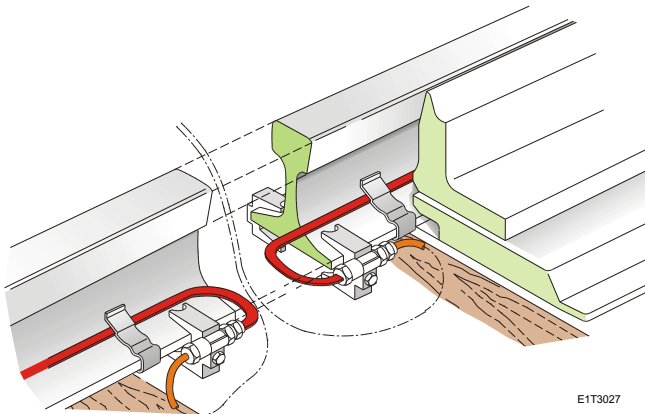


POINT HEATING

Constant wattage strip elements for railway, tram and metro

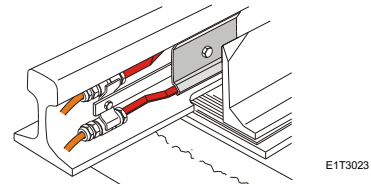
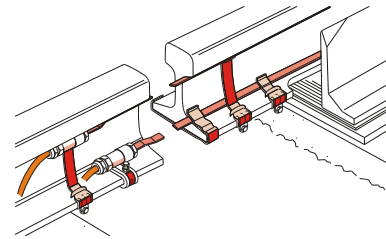


RELIABLE, HIGH PERFORMANCE, LOW MAINTENANCE



In conditions of extreme snowfall and frost, railway points can no longer be switched without malfunctions, since snow is compressed between the switch blade and the stock rail, resulting in the formation of ice.

In order to combat possible malfunctions, electrical 'constant wattage' elements are fitted to the interior of the stock rail.



PROPERTIES:

- NON-CORRODING
- EXCELLENT HEAT TRANSFER
- VARIOUS DESIGNS
- EASY TO INSTALL AND EASY CABLING
- ALTERNATE AND DIRECT CURRENT

HEAT TRANSFER

The heat produced by these strip elements is transferred to the stock rail, switch blade and slide chairs through *convection and radiation*.

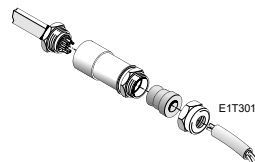
The flat oval shape of the cross-section of an element also ensures that sufficient heat is transferred to the stock rail through *conduction*.

Strip elements used in *railway points* can be sufficiently protected in the curve of the rail foot or the interior middle part of the stock rail. The shape of the connector head depends on the type of point.

The strip elements used in *tram points* are slid into a tube, whereby heat transfer takes place under the rail foot.

Range of model

1) With a screw-on chromium nickel steel connecting tube which is *plastified on the inside*. The supply cable is connected to the element by 2 or 3 fully insulated flat sockets (6,3 x 0,8 mm).



2) With a fixed connector head; the 2 or 3 core supply cable is sealed completely watertight and salt resistant with the element. The UV resistant supply cable is available in all types and lengths

SPECIFICATIONS

Material outside shield of element	: - chromium nickel steel (metro and railway)
Material interior of element	: - salt resistant Incoloy steel (tram) - compressed magnesium oxide
Supply voltages	: - from 100 to 415 VAC and 600 to 800 VDC
Constant wattage of elements	: - from 100 to 400 W per metre of element
Length of the elements	: - from 1 to max. 6 metres
Cross-section of element	: - 12,0x6,0 mm ór 13,5x5,5 mm
Earthing element	: - additional earthing connection on the element
Shape of curve at connector head	: - for all intern. type of points, e.g. UIC54, UIC60, S49

