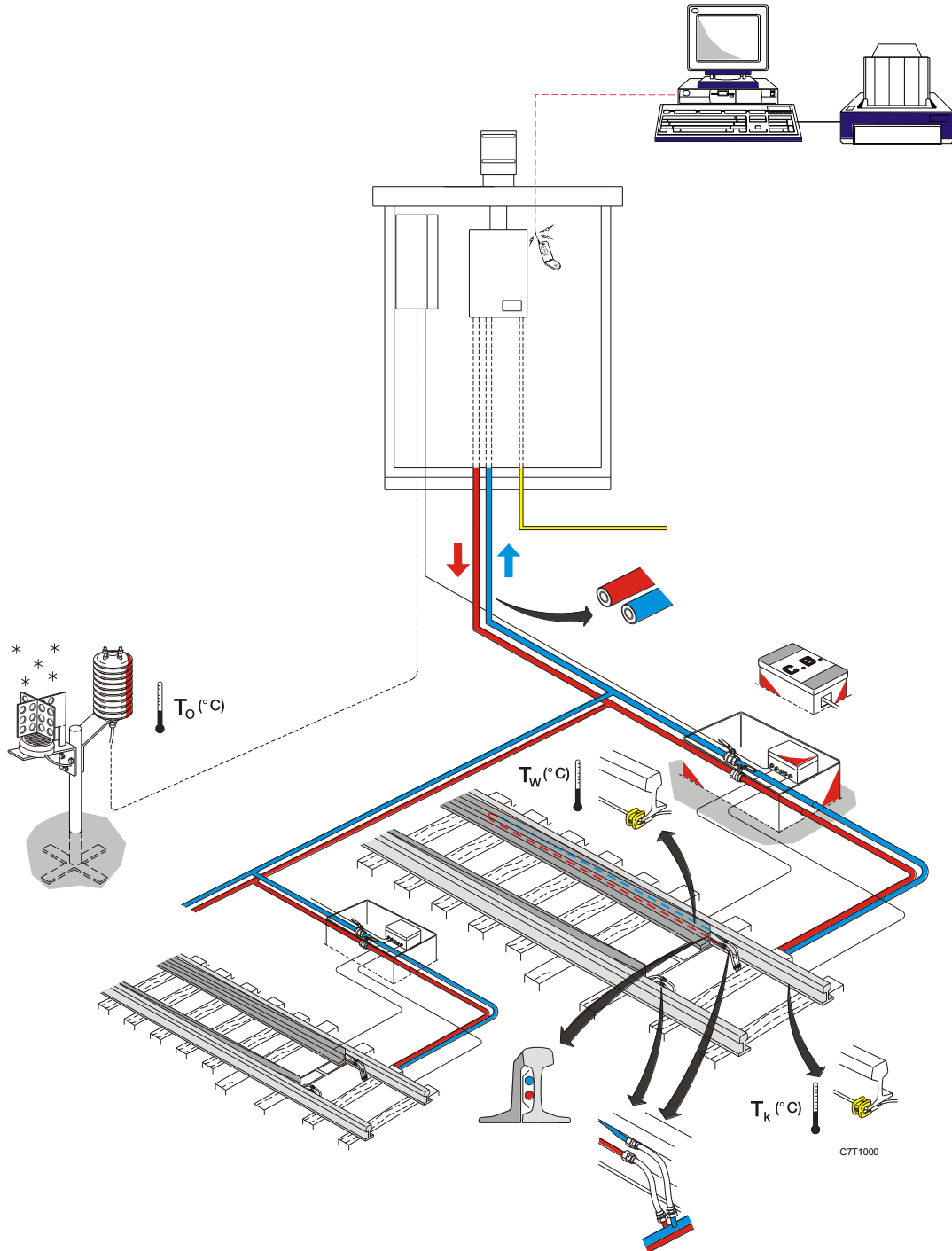


# POINT HEATING

## Central Heating System



### SECURE OPERATION, OPTIMAL HEAT TRANSFER

β



A liquid is heated using a central gas heater (installed in an outside cabinet). The liquid is pumped to and from the points by a circulation pump.

The natural gas for the central heater has a pressure of 20 to 50 mbar.

The pipe transport system consists of insulated plastic pipes, which keep heat loss from the liquid to a minimum. Two pipe colours are used to ensure that the pipes to and back from the points are easy to identify.

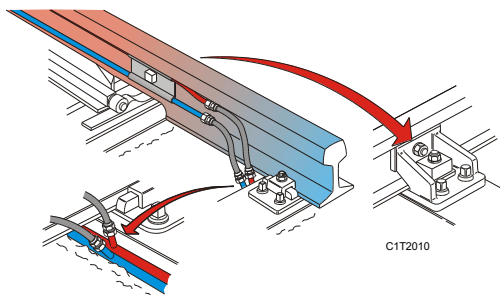
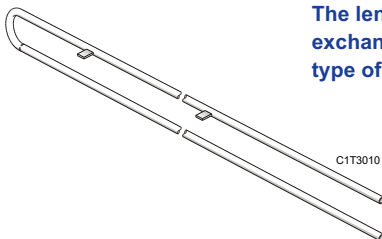
**INSTALLATION AT THE POINTS:**

Long, U-shaped heat exchangers are used in the points.

For each switch blade, a heat exchanger is clamped to the inner side of the rails with plates. These long plates (heating strips) provide for good heat transfer to the stockrail, switch blade and slide plate.



The length of the heat exchanger depends on the type of points.



The connected control and monitoring system switches the heating unit on and off in response to humidity and temperature sensors.

The functioning of the entire system is monitored on a PC via GSM(R) or fiber glass data communication.